



# Service Manual / Manuel de Service

## 1500W Gasoline Generator

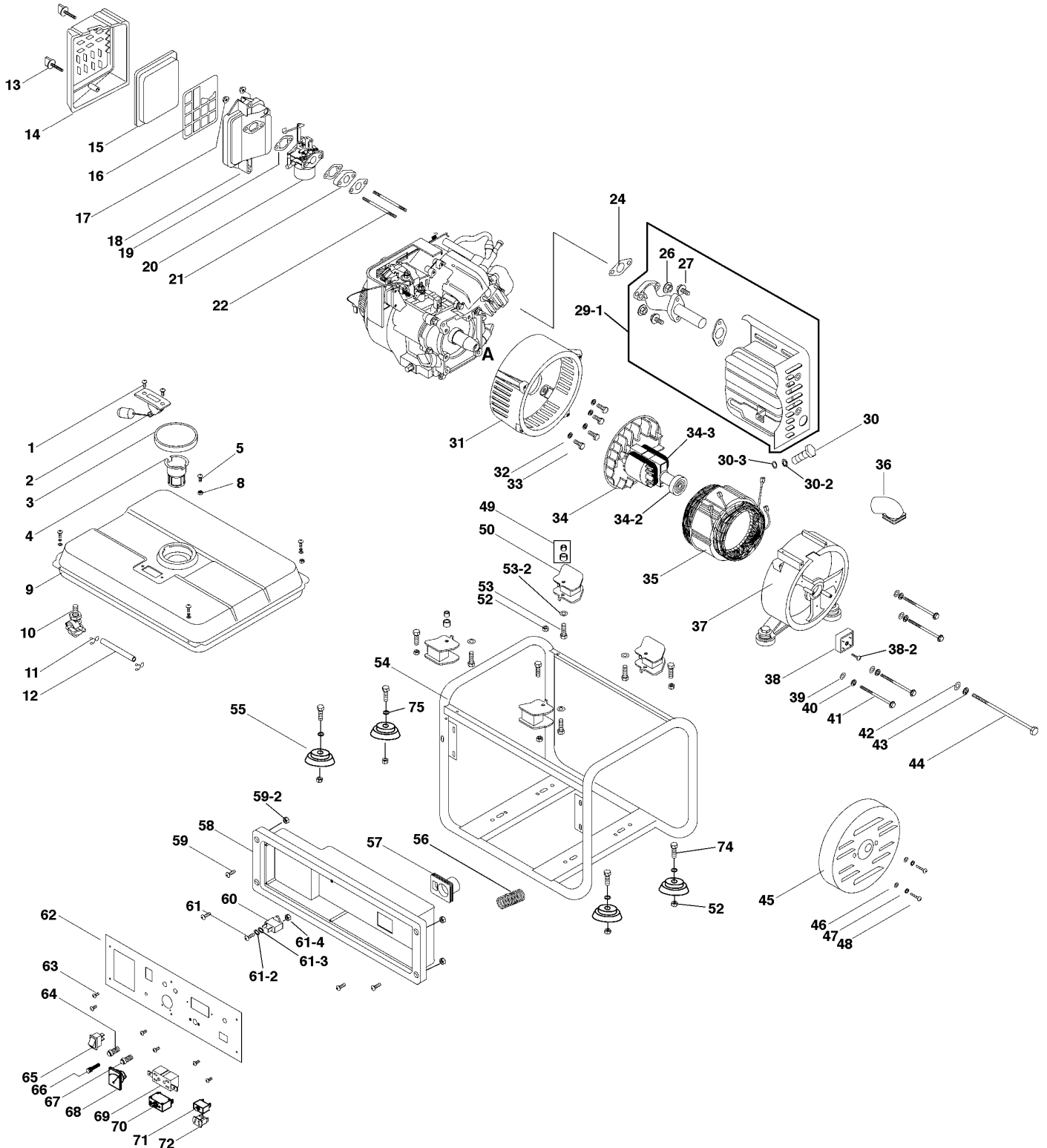
### Génératrice à Essence 1500W



Revised/Revisé 08/2008

Main Diagram / Diagramme Principale

**KCG-1500G**





# Service Manual / Manuel de Service

## 1500W Gasoline Generator

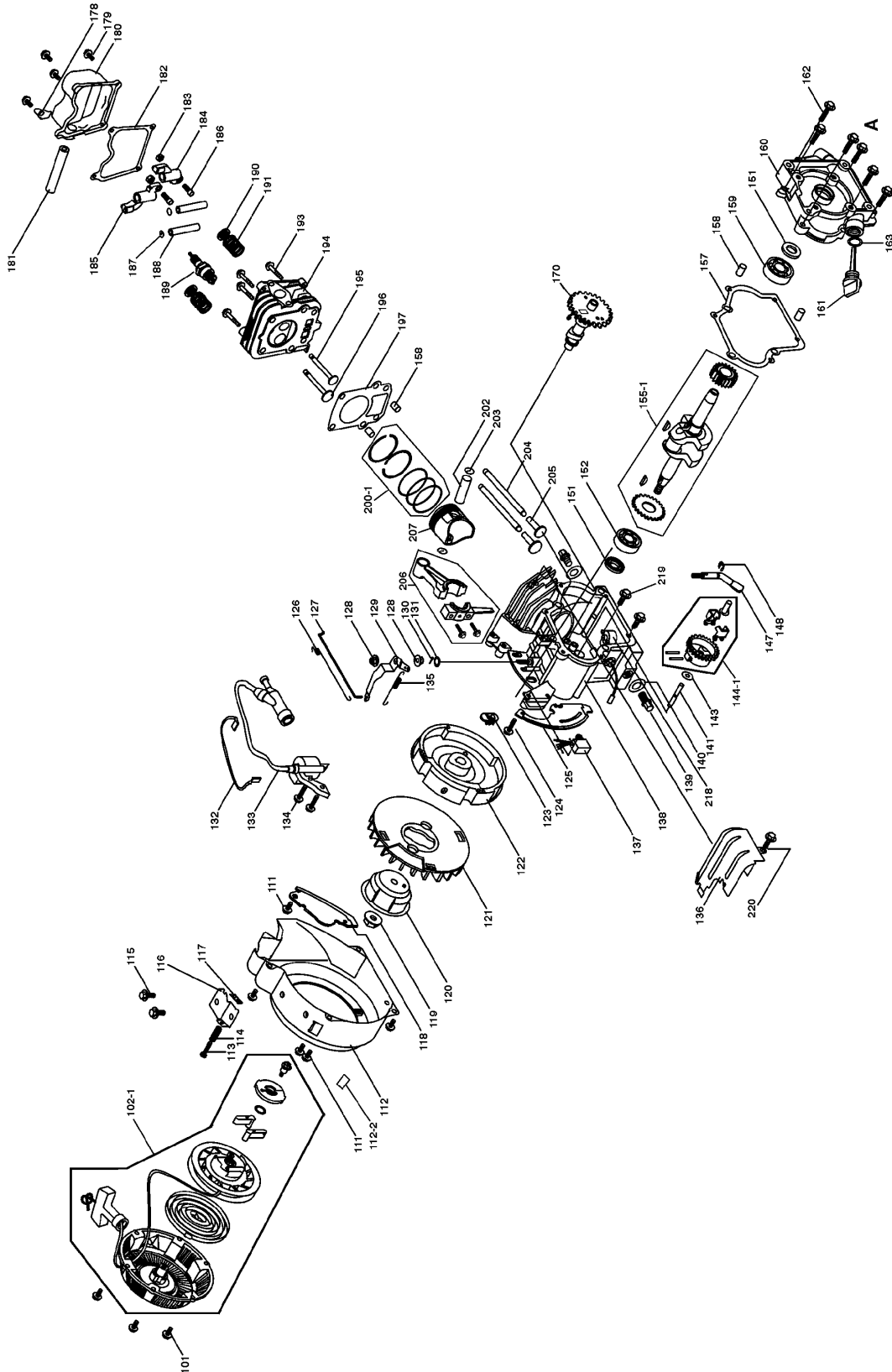
### Génératrice à Essence 1500W



Revised/Revisé 08/2008

### Motor Diagram / Diagramme du Moteur

# KCG-1500G





## Parts Pricing List / Liste de Prix des Pièces

# KCG-1500G

| Diag. | Order # Com. | English Description   | Description Française            | Qty./Qté. | Price/Prix |
|-------|--------------|-----------------------|----------------------------------|-----------|------------|
| 1     | 8115000010   | PAN HD SCREW          | VIS A TETE BOMBEE                | 2         | \$1.55     |
| 2     | 8115000020   | FUEL LEVEL INDICATOR  | INDICATEUR DU NIVEAU D'ESSENCE   | 1         | \$22.94    |
| 3     | 8115000030   | FUEL TANK CAP         | BOUCHON DU RESERVOIR D'ESSENCE   | 1         | \$10.18    |
| 4     | 8115000040   | FUEL STRAINER         | FILTRE D'ESSENCE                 | 1         | \$9.14     |
| 5     | 8115000050   | FLANGE HD HEX. BOLT   | BOULON HEXAGONAL A TETE BRIDEE   | 4         | \$2.65     |
| 8     | 8115000080   | FLANGE HD HEX. NUT    | ECROU HEXAGONAL A TETE BRIDEE    | 4         | \$1.55     |
| 9     | 8115000090   | FUEL TANK             | RESERVOIR A ESSENCE              | 1         | \$68.94    |
| 10    | 8115000100   | FUEL SHUT-OFF VALVE   | SOUPAPE A ESSENCE                | 1         | \$10.29    |
| 11    | 8115000110   | CLIP                  | BAGUE D'ATTACHE                  | 2         | \$2.24     |
| 12    | 8115000120   | FUEL PIPE             | TUYAU D'ESSENCE                  | 1         | \$4.43     |
| 13    | 8115000130   | KNOB                  | BOUTON                           | 2         | \$4.31     |
| 14    | 8115000140   | AIR FILTER CAP        | COUVERCLE DU FILTRE A AIR        | 1         | \$10.29    |
| 15    | 8115000150   | FOAM FILTER           | FILTRE EN MOUSSE                 | 1         | \$14.89    |
| 16    | 8115000160   | AIR FILTER BACK BOARD | PANNEAU ARRIERE DU FILTRE A AIR  | 1         | \$5.69     |
| 17    | 8115000170   | FLANGE HD HEX. NUT    | ECROU HEXAGONAL A TETE BRIDEE    | 2         | \$1.55     |
| 18    | 8115000180   | AIR FILTER BASE       | BASE DU FILTRE A AIR             | 1         | \$10.29    |
| 19    | 8115000190   | CARBURETOR GASKET     | JOINT D'ETANCHEITE/CARBURATEUR   | 3         | \$5.69     |
| 20    | 8115000200   | CARBURETOR            | CARBURATEUR                      | 1         | \$74.69    |
| 21    | 8115000210   | CARBURETOR INSULATOR  | ISOLATEUR DU CARBURATEUR         | 1         | \$10.29    |
| 22    | 8115000220   | THREADED STUD         | TIGE FILETEE                     | 2         | \$2.01     |
| 24    | 8115000240   | EXHAUST GASKET        | JOINT D'ETANCHEITE DU SILENCIEUX | 1         | \$4.43     |
| 26    | 8115000260   | FLANGE HD HEX. NUT    | ECROU HEXAGONAL A TETE BRIDEE    | 2         | \$1.78     |
| 27    | 8115000270   | FLANGE HD HEX. BOLT   | BOULON HEXAGONAL A TETE BRIDEE   | 2         | \$2.65     |
| 29-1  | 8115000291   | MUFFLER ASS'Y         | SILENCIEUX ASSEMBLE              | 1         | \$34.44    |
| 30    | 8115000300   | HEX. BOLT             | BOULON HEXAGONAL                 | 1         | \$1.67     |
| 30-2  | 8115000302   | SPRING WASHER         | RONDELLE A RESSORT               | 1         | \$1.55     |
| 30-3  | 8115000303   | WASHER                | RONDELLE                         | 1         | \$1.55     |
| 31    | 8115000310   | FRONT COVER           | COUVERCLE AVANT                  | 1         | \$43.64    |
| 32    | 8115000320   | TOOTH WASHER          | RONDELLE DENTELEE                | 4         | \$1.78     |
| 33    | 8115000330   | HEX. BOLT             | BOULON HEXAGONAL                 | 4         | \$1.78     |
| 34    | 8115000340   | ROTOR ASS'Y           | ROTOR ASSEMBLE                   | 1         | \$178.19   |
| 34-2  | 8115000342   | BALL BEARING          | ROULEMENT A BILLES               | 1         | \$11.44    |
| 34-3  | 8115000343   | DIODE                 | DIODE                            | 2         | \$2.24     |
| 35    | 8115000350   | STATOR                | STATOR                           | 1         | \$189.69   |
| 36    | 8115000360   | WIRE PROTECTOR        | PROTEGE-CORDON                   | 1         | \$4.54     |
| 37    | 8115000370   | REAR COVER            | COUVERCLE ARRIERE                | 1         | \$55.14    |
| 38    | 8115000380   | DIODE                 | DIODE                            | 1         | \$10.29    |
| 38-2  | 8115000382   | PAN HD SCREW          | VIS A TETE BOMBEE                | 1         | \$1.67     |
| 39    | 8115000390   | WASHER                | RONDELLE                         | 4         | \$1.55     |
| 40    | 8115000400   | SPRING WASHER         | RONDELLE A RESSORT               | 4         | \$1.55     |
| 41    | 8115000410   | HEX. BOLT             | BOULON HEXAGONAL                 | 4         | \$3.16     |
| 42    | 8115000420   | WASHER                | RONDELLE                         | 1         | \$1.55     |
| 43    | 8115000430   | SPRING WASHER         | RONDELLE A RESSORT               | 1         | \$1.67     |
| 44    | 8115000440   | HEX. BOLT             | BOULON HEXAGONAL                 | 1         | \$4.54     |
| 45    | 8115000450   | MAGNETO COVER         | COUVERCLE DU MAGNETO             | 1         | \$14.89    |
| 46    | 8115000460   | WASHER                | RONDELLE                         | 2         | \$1.67     |
| 47    | 8115000470   | SPRING WASHER         | RONDELLE A RESSORT               | 2         | \$1.55     |

\*Pricing subject to change without prior notice. / Prix sujet à changement sans préavis.



## Parts Pricing List / Liste de Prix des Pièces

# KCG-1500G

| Diag. | Order # Com. | English Description          | Description Française             | Qty./Qté. | Price/Prix |
|-------|--------------|------------------------------|-----------------------------------|-----------|------------|
| 48    | 8115000480   | PAN HD SCREW                 | VIS A TETE BOMBEE                 | 2         | \$1.55     |
| 49    | 8115000490   | ANTI-VIBRATION BUSHING       | BAGUE ANTI-VIBRATION              | 2         | \$2.47     |
| 50    | 8115000500   | SHOCK ABSORBER               | AMORTISSEUR                       | 4         | \$11.44    |
| 52    | 8115000520   | LOCK NUT                     | ECROU DE VERROUILLAGE             | 10        | \$3.39     |
| 53    | 8115000530   | HEX. BOLT                    | BOULON HEXAGONAL                  | 4         | \$1.90     |
| 53-2  | 8115000532   | WASHER                       | RONDELLE                          | 4         | \$1.55     |
| 54    | 8115000540   | FRAME                        | CHASSIS                           | 1         | \$97.69    |
| 55    | 8115000550   | RUBBER FOOT                  | PIED EN CAOUTCHOUC                | 4         | \$9.14     |
| 56    | 8115000560   | WIRE COVER                   | COUVRE CORDON                     | 1         | \$4.54     |
| 57    | 8115000570   | CONTROL PANEL OUTLET         | SORTIE DU PANNEAU DE CONTROLE     | 1         | \$5.69     |
| 58    | 8115000580   | REAR ELECTRICAL BOX COVER    | COUVERCLE/BOITIER ELECTRIQUE ARR. | 1         | \$17.19    |
| 59    | 8115000590   | PAN HD SCREW                 | VIS A TETE BOMBEE                 | 4         | \$1.67     |
| 59-2  | 8115000592   | LOCK NUT                     | ECROU DE VERROUILLAGE             | 4         | \$2.47     |
| 60    | 8115000600   | CAPACITOR                    | CONDENSATEUR                      | 1         | \$13.74    |
| 61    | 8115000610   | PAN HD SCREW                 | VIS A TETE BOMBEE                 | 1         | \$1.67     |
| 61-2  | 8115000612   | SPRING WASHER                | RONDELLE A RESSORT                | 1         | \$1.55     |
| 61-3  | 8115000613   | WASHER                       | RONDELLE                          | 1         | \$1.61     |
| 61-4  | 8115000614   | HEX. NUT                     | ECROU HEXAGONAL                   | 1         | \$1.55     |
| 62    | 8115000620   | CONTROL PANEL                | PANNEAU DE CONTROLE               | 1         | \$17.19    |
| 63    | 8115000630   | SELF-TAPPING SCREW (POINTED) | VIS AUTOTARAUDEUSE                | 6         | \$1.67     |
| 64    | 8115000640   | LOW OIL LEVEL LAMP           | LAMPE DE NIVEAU D'HUILE BAS       | 1         | \$3.39     |
| 65    | 8115000650   | ENGINE SWITCH                | INTERRUPTEUR DU MOTEUR            | 1         | \$10.29    |
| 66    | 8115000660   | GROUND TERMINAL              | BORNE DE MISE A LA TERRE          | 1         | \$4.54     |
| 67    | 8115000670   | POWER LAMP                   | LAMPE INDICATRICE DE TENSION      | 1         | \$3.39     |
| 68    | 8115000680   | VOLTMETER                    | VOLTMETRE                         | 1         | \$17.19    |
| 69    | 8115000690   | DUAL OUTLET 120V             | RECEPTACLE DOUBLE 120V            | 1         | \$10.29    |
| 70    | 8115000700   | AC CIRCUIT BREAKER           | DISJONCTEUR CA                    | 1         | \$45.94    |
| 71    | 8115000710   | DC CIRCUIT BREAKER           | DISJONCTEUR CC                    | 1         | \$11.44    |
| 72    | 8115000720   | DC OUTLET                    | RECEPTACLE DC                     | 1         | \$13.74    |
| 74    | 8115000740   | HEX. BOLT                    | BOULON HEXAGONAL                  | 4         | \$1.78     |
| 75    | 8115000750   | TOOTH WASHER                 | RONDELLE DENTELEE                 | 4         | \$1.78     |
| 101   | 8115001010   | FLANGE HD HEX. BOLT          | BOULON HEXAGONAL A TETE BRIDEE    | 3         | \$2.13     |
| 102-1 | 8115001021   | RECOIL STARTER ASS'Y         | SYSTEME DE DEMARRAGE MAN. ASS.    | 1         | \$43.64    |
| 111   | 8115001110   | FLANGE HD HEX. BOLT          | BOULON HEXAGONAL A TETE BRIDEE    | 5         | \$2.01     |
| 112   | 8115001120   | FAN SHROUD                   | MONTURE DU VENTILATEUR            | 1         | \$22.94    |
| 112-2 | 8115001122   | RUBBER COVER                 | COUVERCLE EN CAOUTCHOUC           | 1         | \$2.59     |
| 113   | 8115001130   | PAN HD SCREW                 | VIS A TETE BOMBEE                 | 1         | \$2.01     |
| 114   | 8115001140   | SPRING                       | RESSORT                           | 1         | \$2.93     |
| 115   | 8115001150   | FLANGE HD HEX. BOLT          | BOULON HEXAGONAL A TETE BRIDEE    | 2         | \$2.13     |
| 116   | 8115001160   | THROTTLE ADJUSTMENT BRACKET  | SUPPORT D'AJUSTEMENT/PUISSANCE    | 1         | \$4.31     |
| 117   | 8115001170   | THROTTLE ADJUSTMENT PLATE    | PLAQUE D'AJUSTEMENT DE PUISSANCE  | 1         | \$3.39     |
| 118   | 8115001180   | FRONT WIND COVER             | PARE-VENT AVANT                   | 1         | \$9.14     |
| 119   | 8115001190   | LOCK NUT                     | ECROU DE VERROUILLAGE             | 1         | \$4.43     |
| 120   | 8115001200   | STARTER PULLEY               | POULIE DE DEMARRAGE               | 1         | \$9.14     |
| 121   | 8115001210   | COOLING FAN                  | VENTILATEUR                       | 1         | \$14.89    |
| 122   | 8115001220   | MAGNETO                      | MAGNETO                           | 1         | \$45.94    |
| 123   | 8115001230   | WIRE HOLDER                  | RETENEUR DE FIL                   | 1         | \$3.74     |

\*Pricing subject to change without prior notice. / Prix sujet à changement sans préavis.



## Parts Pricing List / Liste de Prix des Pièces

# KCG-1500G

| Diag. | Order # Com. | English Description | Description Française            | Qty./Qté. | Price/Prix |
|-------|--------------|---------------------|----------------------------------|-----------|------------|
| 124   | 8115001240   | FLANGE HD HEX. BOLT | BOULON HEXAGONAL A TETE BRIDEE   | 1         | \$2.01     |
| 125   | 8115001250   | BACK WIND COVER     | PARE-VENT ARRIERE                | 1         | \$11.44    |
| 126   | 8115001260   | THROTTLE SPRING     | RESSORT DE PUISSANCE             | 1         | \$3.28     |
| 127   | 8115001270   | GOVERNOR ROD        | TIGE DU REGULATEUR DE VITESSE    | 1         | \$3.39     |
| 128   | 8115001280   | LOCK NUT            | ECROU DE BLOCAGE                 | 2         | \$1.78     |
| 129   | 8115001290   | REGULATING ARM      | BRAS DE REGULATION               | 1         | \$5.69     |
| 130   | 8115001300   | LOCK PIN            | GOUPILLE DE VERROUILLAGE         | 1         | \$2.01     |
| 131   | 8115001310   | WASHER              | RONDELLE                         | 1         | \$1.55     |
| 132   | 8115001320   | GROUND WIRE         | FIL DE MISE A LA TERRE           | 1         | \$3.39     |
| 133   | 8115001330   | IGNITION COIL       | ENROULEMENT D'ALLUMAGE           | 1         | \$40.19    |
| 134   | 8115001340   | FLANGE HD HEX. BOLT | BOULON HEXAGONAL A TETE BRIDEE   | 2         | \$2.24     |
| 135   | 8115001350   | GOVERNOR SPRING     | RESSORT DU REGULATEUR DE VITESSE | 1         | \$3.62     |
| 136   | 8115001360   | TOP WIND COVER      | PARE-VENT DU DESSUS              | 1         | \$14.89    |
| 137   | 8115001370   | ELECTRONIC MODULE   | MODULE ELECTRIQUE                | 1         | \$14.89    |
| 138   | 8115001380   | CRANKCASE           | CARTER                           | 1         | \$143.75   |
| 139   | 8115001390   | DRAIN PLUG          | BOUCHON DE VIDANGE               | 2         | \$3.05     |
| 140   | 8115001400   | DRAIN PLUG SEAL     | RONDELLE DU BOUCHON DE VIDANGE   | 2         | \$1.67     |
| 141   | 8115001410   | GOVERNOR SHAFT      | TIGE DU REGULATEUR DE VITESSE    | 1         | \$6.61     |
| 143   | 8115001430   | WASHER              | RONDELLE                         | 1         | \$1.67     |
| 144-1 | 8115001441   | GOVERNOR KIT        | ENS. DU REGULATEUR DE VITESSE    | 1         | \$14.89    |
| 147   | 8115001470   | GOVERNOR ARM SHAFT  | TIGE DU BRAS DU REGULATEUR       | 1         | \$5.46     |
| 148   | 8115001480   | "E" RETAINING RING  | ANNEAU DE RETENU EN "E"          | 1         | \$1.67     |
| 151   | 8115001510   | OIL SEAL            | JOINT D'ETANCHEITE               | 2         | \$16.96    |
| 152   | 8115001520   | BALL BEARING        | ROULEMENT A BILLES               | 1         | \$12.59    |
| 155-1 | 8115001551   | CRANKSHAFT ASS'Y    | CARTER ASSEMBLEE                 | 1         | \$97.69    |
| 157   | 8115001570   | CRANKCASE GASKET    | JOINT D'ETANCHEITE DU CARTER     | 1         | \$14.89    |
| 158   | 8115001580   | GUIDE PIN           | GOUPILLE GUIDE                   | 4         | \$1.90     |
| 159   | 8115001590   | BALL BEARING        | ROULEMENT A BILLES               | 1         | \$18.34    |
| 160   | 8115001600   | CRANKCASE COVER     | COUVERCLE DU CARTER              | 1         | \$51.69    |
| 161   | 8115001610   | OIL LEVEL GAUGE     | JAUGE DU NIVEAU D'HUILE          | 1         | \$5.69     |
| 162   | 8115001620   | FLANGE HD HEX. BOLT | BOULON HEXAGONAL A TETE BRIDEE   | 6         | \$2.70     |
| 163   | 8115001630   | O-RING              | JOINT TORIQUE                    | 1         | \$1.67     |
| 170   | 8115001700   | COMPLETE CAMSHAFT   | ARBRE A CAME COMPLET             | 1         | \$91.94    |
| 178   | 8115001780   | WIRE BRACKET        | SUPPORT DU FIL                   | 1         | \$2.24     |
| 179   | 8115001790   | FLANGE HD HEX. BOLT | BOULON HEXAGONAL A TETE BRIDEE   | 4         | \$2.70     |
| 180   | 8115001800   | HEAD COVER          | COUVERCLE DE LA TETE             | 1         | \$22.94    |
| 181   | 8115001810   | BREATHER TUBE       | TUBE DE RENIFLARD                | 1         | \$4.54     |
| 182   | 8115001820   | HEAD COVER GASKET   | JOINT D'ETANCHEITE DU COUVERCLE  | 1         | \$11.44    |
| 183   | 8115001830   | PIVOT ADJUSTING NUT | ECROU D'AJUSTEMENT DU PIVOT      | 2         | \$2.01     |
| 184   | 8115001840   | EXHAUST ROCKER      | CULBUTEUR DE L'ECHAPPEMENT       | 1         | \$9.14     |
| 185   | 8115001850   | INTAKE ROCKER       | CULBUTEUR DE L'ADMISSION         | 1         | \$7.99     |
| 186   | 8115001860   | PIVOT BOLT          | BOULON DE PIVOTEMENT             | 2         | \$3.39     |
| 187   | 8115001870   | RETAINING RING/BORE | ANNEAU DE RETENU/ALESAGE         | 2         | \$2.24     |
| 188   | 8115001880   | ROCKER SHAFT        | TIGE DE CULBUTEUR                | 2         | \$5.69     |
| 189   | 8115001890   | SPARK PLUG          | BOUGIE D'ALLUMAGE                | 1         | \$11.44    |
| 190   | 8115001900   | VALVE SPRING SEAT   | SIEGE DU RESSORT DE LA SOUPEPE   | 2         | \$5.46     |
| 191   | 8115001910   | VALVE SPRING        | RESSORT DE LA SOUPEPE            | 2         | \$6.84     |

\*Pricing subject to change without prior notice. / Prix sujet à changement sans préavis.



## Parts Pricing List / Liste de Prix des Pièces

# KCG-1500G

| Diag. | Order # Com. | English Description        | Description Française          | Qty./Qté. | Price/Prix |
|-------|--------------|----------------------------|--------------------------------|-----------|------------|
| 193   | 8115001930   | FLANGE HD HEX. BOLT        | BOULON HEXAGONAL A TETE BRIDEE | 4         | \$2.36     |
| 194   | 8115001940   | CYLINDER HEAD              | TETE DU CYLINDRE               | 1         | \$57.44    |
| 195   | 8115001950   | EXHAUST VALVE              | SOUPAPE D'ECHAPPEMENT          | 1         | \$17.19    |
| 196   | 8115001960   | INTAKE VALVE               | SOUPAPE D'ADMISSION            | 1         | \$17.19    |
| 197   | 8115001970   | CYLINDER HEAD GASKET       | JOINT D'ETANCHEITE DE LA TETE  | 1         | \$11.44    |
| 200-1 | 8115002001   | PISTON RING SET            | ENSEMBLE ANNEAU DE PISTON      | 1         | \$20.64    |
| 202   | 8115002020   | PISTON PIN                 | GOUPILLE DU PISTON             | 1         | \$7.99     |
| 203   | 8115002030   | WIRE RING                  | ANNEAU DE RETENUE              | 2         | \$1.67     |
| 204   | 8115002040   | PUSH ROD                   | TIGE DE POUSSEE                | 2         | \$5.69     |
| 205   | 8115002050   | TAPPET                     | POUSSOIR                       | 2         | \$7.99     |
| 206   | 8115002060   | COMPLETE CONNECTING ROD    | TIGE DE PIVOTEMENT COMPLETE    | 1         | \$34.44    |
| 207   | 8115002070   | PISTON                     | PISTON                         | 1         | \$22.94    |
| 218   | 8115002180   | OIL LEVEL SENSOR           | DETECTEUR DE NIVEAU D'HUILE    | 1         | \$28.69    |
| 219   | 8115002190   | FLANGE HD HEX. BOLT        | BOULON HEXAGONAL A TETE BRIDEE | 2         | \$2.13     |
| 220   | 8115002200   | FLANGE HD HEX. BOLT        | BOULON HEXAGONAL A TETE BRIDEE | 1         | \$2.01     |
|       | 811500MBIL   | BILINGUAL MANUAL KCG-1500G | MANUEL BILINGUE KCG-1500G      | 1         | \$15.00    |

\*Pricing subject to change without prior notice. / Prix sujet à changement sans préavis.